

## 264-Front Bumper Bar

Use the 264-Front Bumper Bar to add auxiliary headlights, mount a Hi-lift jack, or numerous other types of off-road gear to an OEM bumper or one of Olympic 4x4 Products many heavy-duty front bumpers. Made from 2" X .120" wall round steel tubing, easily mounts to pre existing mounting holes on Wrangler T.J. Drilling optional for added strength. Will work with OEM tow hooks and many different winch plates. Olympic 4x4 Products are serviced by our factory. We provide answers to installation questions. Try us before the hassle of returning Olympic 4x4 Products to your retailer or mail order specialist. Mount up to 4 lights and your hi-lift jack. Use 1/2" hardware to secure hi-lift jack (not included).



**For assistance please call (800) 777-0878.**

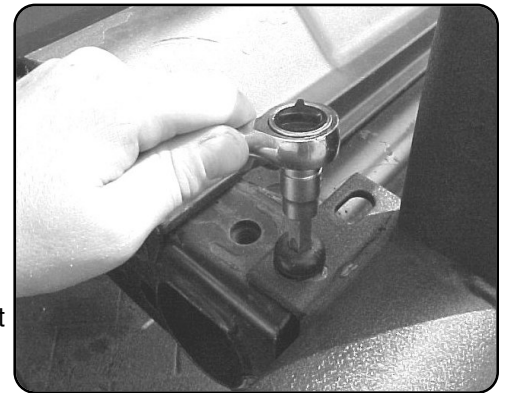
### **Tools required:**

3/8" or 1/2" drive ratchet wrench  
#55 Torx bit socket  
Drill motor  
1/2" drill bit

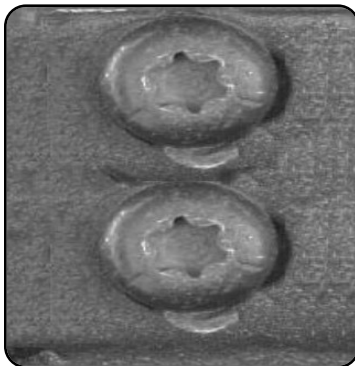
### **Hardware list:**

2	7/16"x 1 1/4" hex head bolts
2	7/16" flat washer
2	7/16" lock washer

1/2" hardware required to install hi-lift jack and is **not included**.



Step 1. Remove the top bumper mounting hardware; this consists of four (4) #55 torx bit bolts.



Step 2. Install the 264-Front Bumper Bar by front bumper bar on top of bumper and lining up the mounting holes with the holes in your front bumper.

Step 3. Secure 264-Front Bumper Bar and front bumper with the OEM #55 torx bit bumper mounting bolts you removed in step 1.

Step 4. Install auxiliary driving lights of your choice, or mount your Hi-lift jack.

**Note:** For added strength. You may wish to drill corresponding holes in your front bumper. Use 7/16" hardware to secure the front bumper bar to the face of your bumper. You will need to use a 1/2" or larger drill bit. The head of the bolt, lock washer, and flat washer will be on the inside of your bumper, they will pass thru the bumper face and thread into front bumper bar. You will want to paint all the raw steel spots that are on the bumper after you drill the mounting holes. It is advised that you drill a small pilot hole and work your way up to a 1/2" drill bit.

